



FIRST 1,000 DAYS

COMMUNITY PARTNERSHIPS KICK-OFF

JUNE 21, 2017

BRAIN SCIENCE DRIVEN HISTORY, SUCCESSES, AND FUTURE OPPORTUNITY

Ruth Kagi

House of Representatives

32nd Legislative District

Chair, Early Learning & Human Services Committee

GUIDING PRINCIPLES

Co-Creation

*What can we learn from families? On-the-ground implementers?
How can we leverage the latest basic science to make it more impactful?*

Precision

Clarity and accuracy in understanding what a program entails and how it is helpful

Segmentation

*For whom does it work,
and for whom does it not work?*

Modularity

*Which components of a system can
be separated and re-combined?*

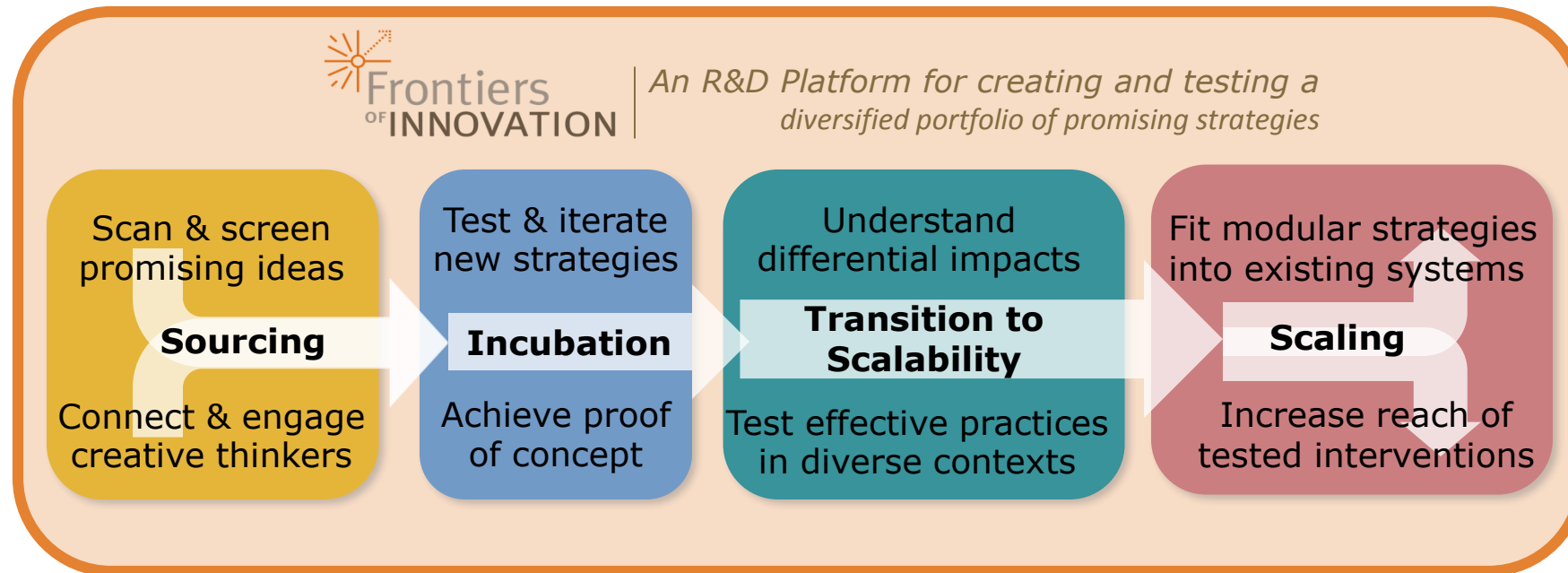
Fast-cycle Iteration

Taking all of this learning back to the drawing board to continue innovating

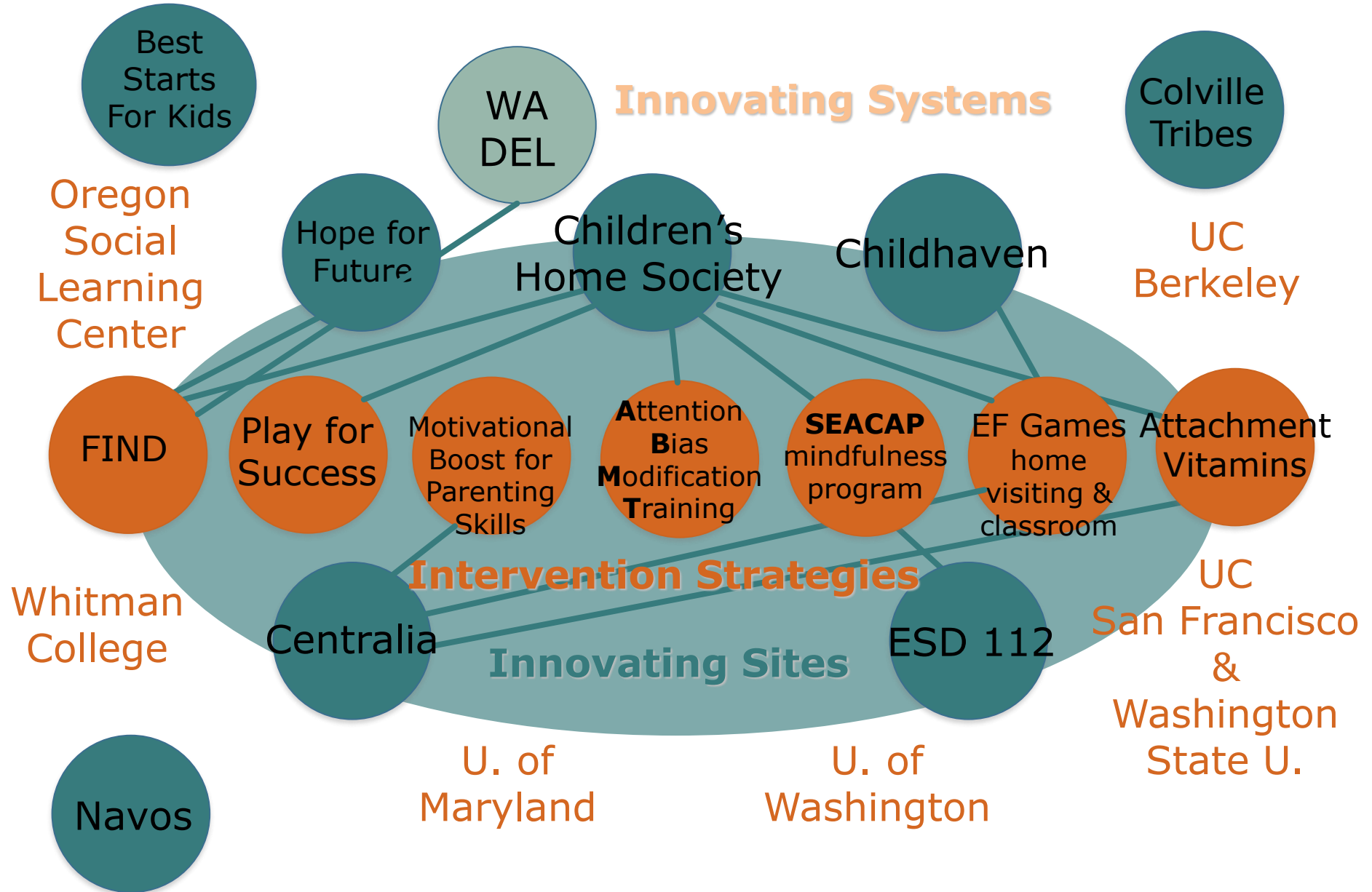
Shared Learning

What can we learn from others in the FOI community?

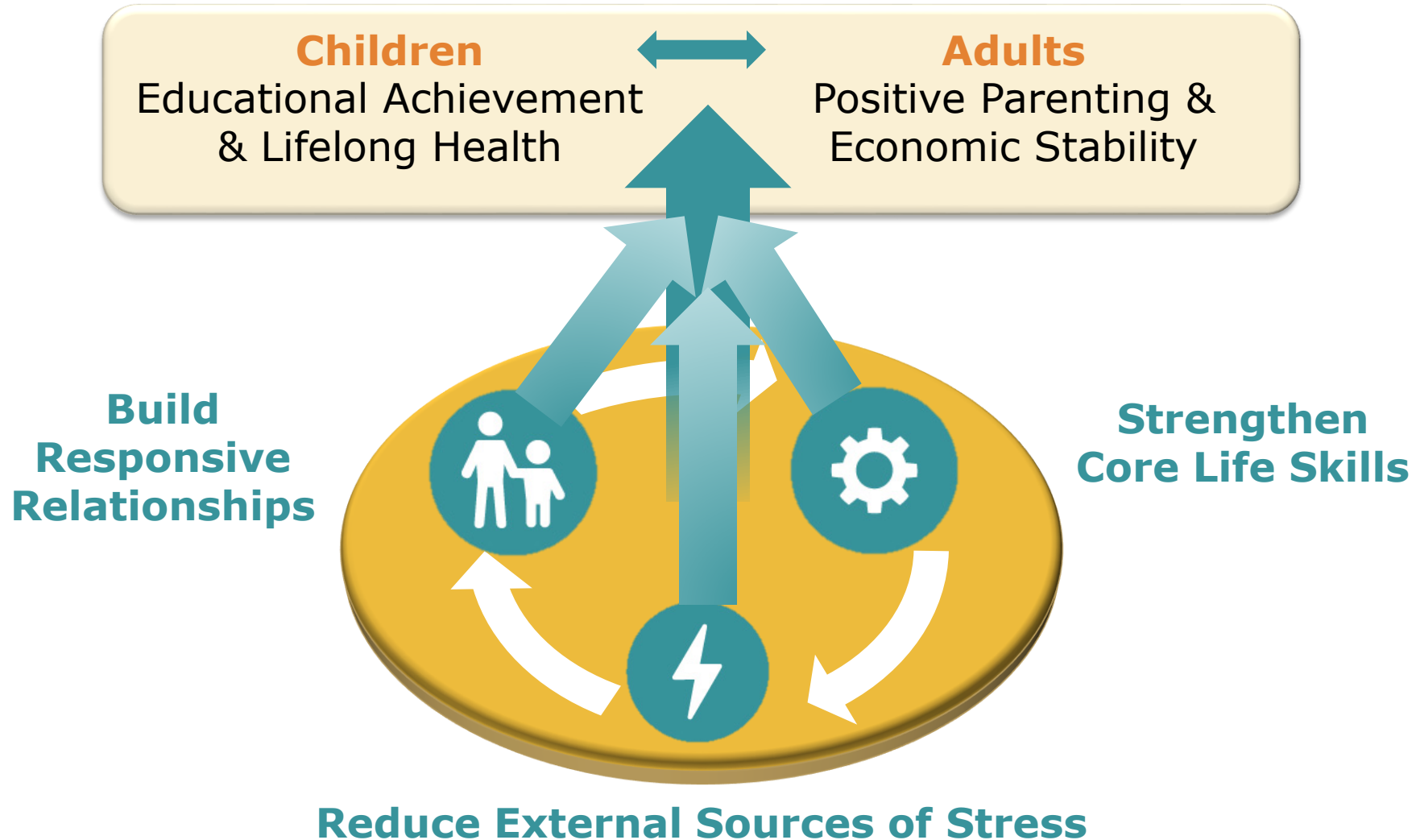
Partnering to build an Innovation Pipeline for the Early Childhood Field



Washington Innovation Cluster



Leveraging Science to Strengthen Current Efforts and Drive Innovation in Policies & Programs





FIRST **1,000** DAYS

FIRST 1,000 DAYS GOALS

This is *not* a new initiative!

Goals

1. Improve early identification, triage, and a community coordinated response, to prevent and to mitigate common family stressors,
2. Support positive parent-child relationships to buffer young children from toxic stress to promote optimal development.

Approach

- Community based, co-generative learning with family (human) centered design
- Learn what works and what doesn't
- Test those systems learnings in rapid cycle learning (PDSA) framework

System Strategy	Focus Areas	Outcomes/Proximal Measures
Develop and implement universal family risk screening and tiered response for...	Housing and Economic stability	<ul style="list-style-type: none"> • Family with safe place to live • Family able to meet basic needs
	Parental mental health and Substance use	<ul style="list-style-type: none"> • Parents or caregiver sad or anxious • Parents or caregivers with excessive use of alcohol or other substances/signs of addiction
	Family relationships and social support	<ul style="list-style-type: none"> • Supportive partner or family violence • Network of family and friends
Innovation around caregiver skill building and capacity by...	Creating targeted linkages to existing services and supports	<ul style="list-style-type: none"> • Caregiver responsive to child needs • Parent-child “Serve-and-Return” • Child attachment and bonding
	Identifying areas where we need more	
	Identify areas where a new solution may be needed	
Measure and monitor desired changes related to...	System	<ul style="list-style-type: none"> • System/service capacity and coordination • System ease of use • Earliest identification of risk or problems
	Family	<ul style="list-style-type: none"> • Parental stress, anxiety, and depression • Parenting knowledge and skill
	Child	<ul style="list-style-type: none"> • Child abuse and neglect • Child developmental progress (social-emotional, cognitive) • Pre-school expulsion

First 1,000 Days Community Engagement Work Plan



Deep Dive Communities

- ★ **First 1,000 Days Round I**
 - Skagit County
 - Walla Walla County
- ★ **First 1,000 Days Round II**
 - Pacific County
 - Whatcom County
- ★ **Technical Assistance**
 - Cascade Pacific Action Alliance
 - Enumclaw School District
 - Kitsap County
 - Northwest Early Learning
 - Harborview Pediatrics
 - Kindering (foster care)

Potential Learning Collaboratives

- ★ **Broad Learning Collaborative**
 - Benton Franklin Counties
 - Cascade Pacific Action Alliance
 - Kitsap Strong
 - Northwest Early Learning
 - Pacific County
 - Skagit County
 - Snohomish County
 - Southwest Washington Regional Health Alliance
 - Spokane Regional Health District
 - Walla Walla County
 - Whatcom County
- ★ **K-12 Early Learning Collaborative**
 - Enumclaw School District
 - Peninsula Schools
 - Tacoma Schools
- ★ **Small Community Learning Collaborative**
 - Kittitas County
 - Pacific County
 - Whitman County